



peugeot504.com

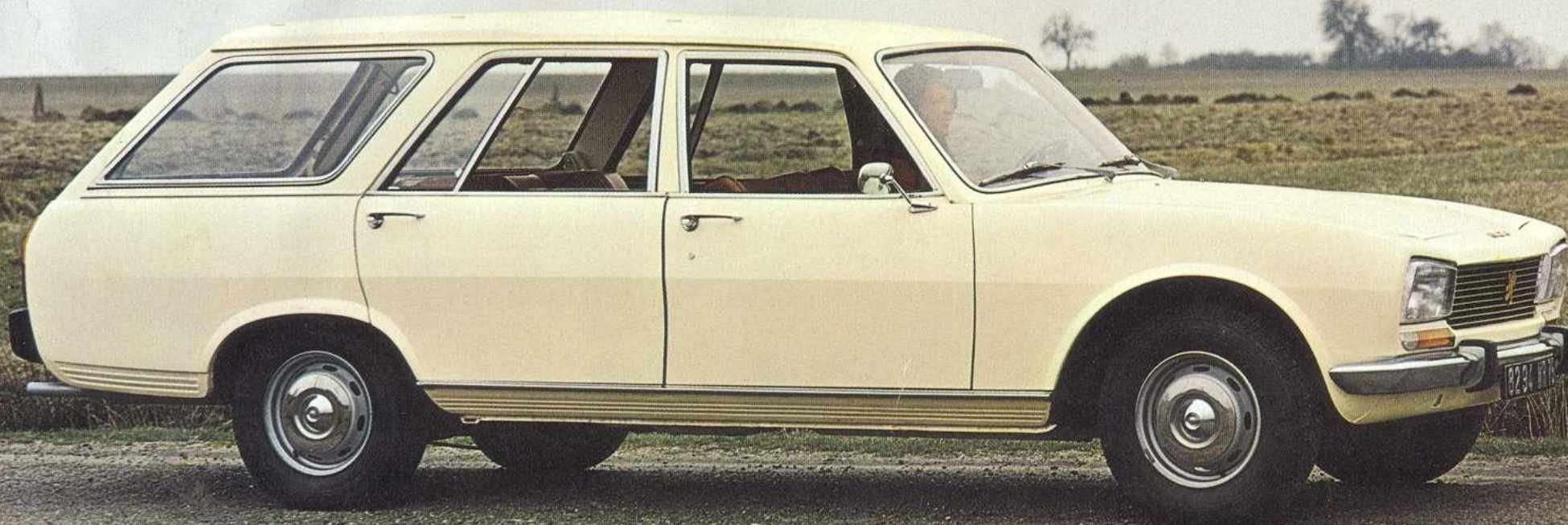
# 504 PEUGEOT



Peugeot has just brought out a new model derived from the 504 Saloon for people who not only require space, but also comfort, safety and who appreciate elegance and refinement.

Although it is certain that the three versions of this new 504 model, the Estate Car, and the Family Estate Car and the Van-have a family resemblance with the 504 Saloon, they nevertheless have their own personality and have been designed to fulfill their dual vocation: luxury and space.

Wearing a tuxedo or velvet trousers, an evening dress or Bermuda shorts, you will always find yourself perfectly at ease at the wheel of the new 504 series.

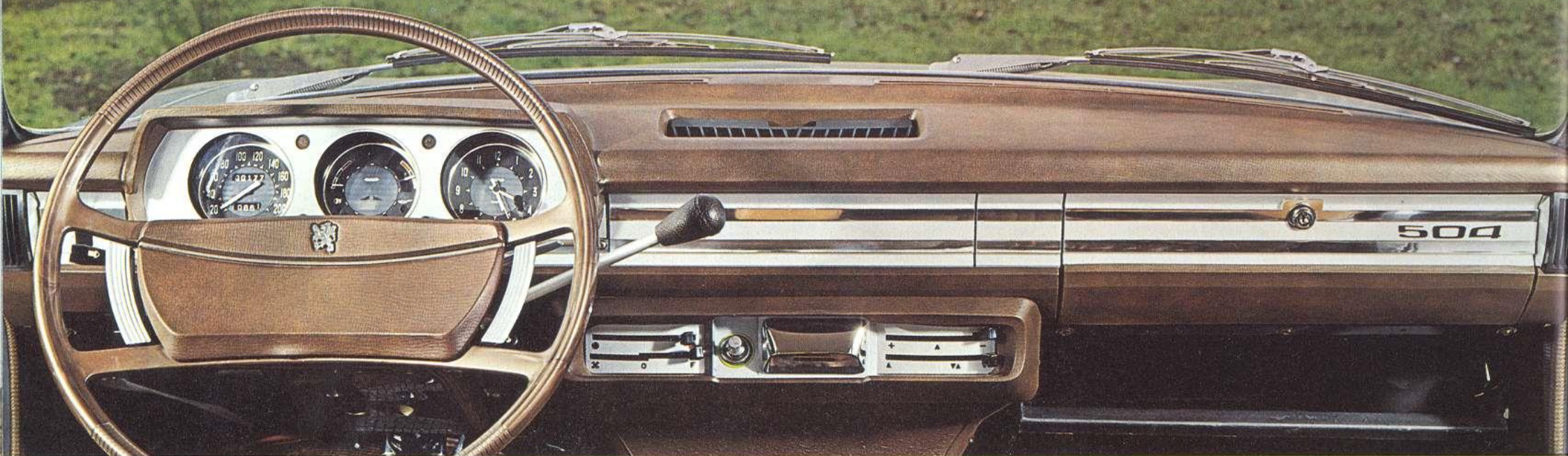






peugeot504 info







## the 504 estate car

The 504 Estate Car possesses all the technical qualities of the Saloon but has been more particularly designed for fresh air lovers and all "enthusiasts" that always have so much to take with them but do not wish to sacrifice their comfort.

These discerning people will discover the luxury, the harmony of the very complete dashboard where each detail has been studied for the well-being of all: the ventilation indicator lights, ashtray and cigar lighter, two glove compartments under the dashboard, an electrical windshield wiper-washer, the side window defrosting and demisting louvers.... just so many agreeable features that make all the difference.

They will also find:

- Individual front arm chair seats
- Adjustable headrests
- Central glove compartment between front seats
- Large armrests
- Outside rear view mirrors on each side
- Safety belts (front seats)

And, for the "incorrigibles" the vast space in the back becomes even vaster when the rear seat is folded down.

Also available with automatic gearbox.





peugeot504.info

## the 504 family van

For large families with young and older children for whom journeys are always a headache, for those who seek a made to measure car, the 504 Family Van elegantly solves their problem.

Seven persons seated comfortably, large baggage space and, even more, the qualities of the 504.

Also delivered with automatic gearbox.









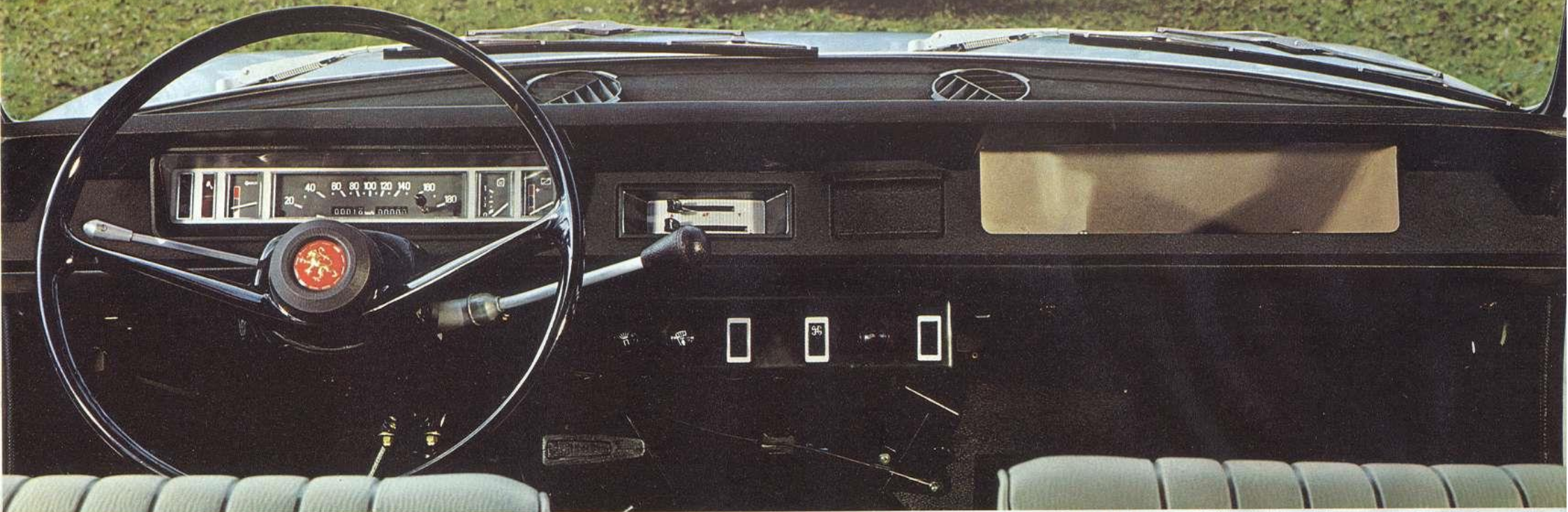
## the 504 van

For those activities have "cumbersome" aspects, who cannot travel without equipment but who, at the same time, seek a vehicle to comfortably transport several persons, the 504 Van will solve all their problems.

Its exceptional loading space, its five seats, its comfort, its great road qualities render it both agreeable for work and tourism.















From left to right:  
Driver and 4 passengers:  
plenty of space for baggage  
or parcels.

Driver and 1 passenger:  
with the rear seat raised  
and the back folded  
against it, the length  
of the loading space is  
considerably increased.

Driver and 1 Passenger:  
with rear seat removed,  
a large volume is obtained  
and a vast useful area  
to transport goods.

Driver alone:  
With rear seat removed  
and right-hand front seat  
temporarily withdrawn  
enables maximum volume  
and length loading for  
cumbersome objects.



# general characteristics

**Van:** carburetor engine  
Bore-Stroke: 84 × 81 - Cylinder capacity: 1,796 cc  
Compression ratio: 7.5/1  
Taxable horsepower: 10 HP  
Max power SAE: 80 hp at 5,500 rpm  
DIN: 73 hp at 5,000 rpm  
Speed: 91 M.P.H. (146 km/h)

## Diesel Engines

4 cylinder in line super-square engine canted at 20°  
Special light alloy cylinder head with turbulence chamber  
Removable wet liners  
Side camshaft in cylinder block  
Rocker arm operated overhead valves  
5 bearing crankshaft

## Family and Estate Car: XD 90 deferred injection engine

Bore-stroke: 90 × 83 - Cylinder capacity 2,112 cc  
Compression ratio: 22.2/1  
Taxable horsepower: 8 HP  
Max power DIN: 65 hp at 4,500 rpm  
Speed: 78 M.P.H. (126 km/h)  
Automatic disengageable fan (Peugeot patent)

**Van:** XD 88 engine inclined at 20°  
Bore-stroke: 88 × 80 - Cylinder capacity: 1,948 cc  
Compression ratio: 21/1  
Taxable horsepower: 8 HP  
Max power DIN: 53.5 hp at 4,500 rpm  
Speed: 72 M.P.H. (116 km/h)

## Clutch

Diaphragm mechanism  
Ball bearing thrust release with hydraulic control

## Mechanical Gearbox

4 silent synchronized forward gears and reverse

## Transmission

Hypoid differential

## Suspension

Independent front wheels  
Coil springs and Peugeot hydraulic, telescopic double acting shock absorbers  
Front wheel system with integrated telescopic suspension  
Front and rear roll bars on Estate Car and Family models

## Wheels and Tires

Wheel dia. 14" (355 mm)  
Reinforced 7" × 14" - 185 × 355 tires (185 SR 14)

## Rack and Pinion Steering

Safety steering column in two sections joined with universal joint  
Anti-theft lock blocking steering gear  
Turning circle between pavements: 18' (5.48 m)  
Turning circle between walls: 18' 9" (5.70 m)

## Disc Brakes on front wheels, Drum Brakes on rear wheels

Hydraulic control with Mastervac assistance  
Hand brake and brake fluid level indicator light  
Hand brake on rear wheels

## Electrical Equipment

Power supply from alternator and 12 volt battery  
Estate Car and Family:  
Incorporated reversing lights in rear light units  
2 speed and automatic parking windshield wiper  
Windshield wiper control under steering wheel with delay system coupled with the electrical pump windshield washer  
2 horns with tuned tones

## Bodywork and General Information

Electrophoresis anticorrosion treated steel self-supporting bodywork  
Engine bonnet with double side locking  
Curved side windows  
Total apparent glassed in area: 9' 9" (2.96 m<sup>2</sup>)  
Polished stainless steel bumpers  
Overall length: 15' 9" (4.80 m)  
Overall width: 5' 7" (1.69 m)  
Height when empty: 5' 1" (1.55 m)  
Height when loaded: 4' 9" (1.45 m)  
Useful volume: Estate Car and Van:  
3' 9" to 6' 3" (1.150 m<sup>3</sup> to 1.900 m<sup>3</sup>)  
Wheel base: 9' 6" (2.90 m)  
Front track: 4' 8" (1.42 m) - Rear track: 4' 6" (1.36 m)  
Towing capability: 2,860 lbs (1,300 kg)  
Tank capacity: 13 gallons (60 l)

## Engines with Carburetor

4 cylinder in line super-square engine inclined at 45°  
Cylinder head with common admission chambers  
Removable wet liners - Overhead valves and rockers  
5 bearing forged steel crankshaft  
Total capacity of water system: 6.8 quarts (7.8 l)  
Engine oil capacity: 3.5 quarts (4 l)

## Estate Car and Family:

Estate Car compound double barrel carburetor  
Bore-Stroke: 88 × 81 - Cylinder capacity: 1,971 cc  
Compression ratio: 8.35/1  
Taxable horsepower: 11 HP  
Max power SAE: 98 hp at 5,600 rpm  
DIN: 93 hp at 5,200 rpm  
Speed: 99.5 M.P.H. (160 km/h)  
Automatic electro-magnetic disengageable fan (Peugeot patent)

# PEUGEOT