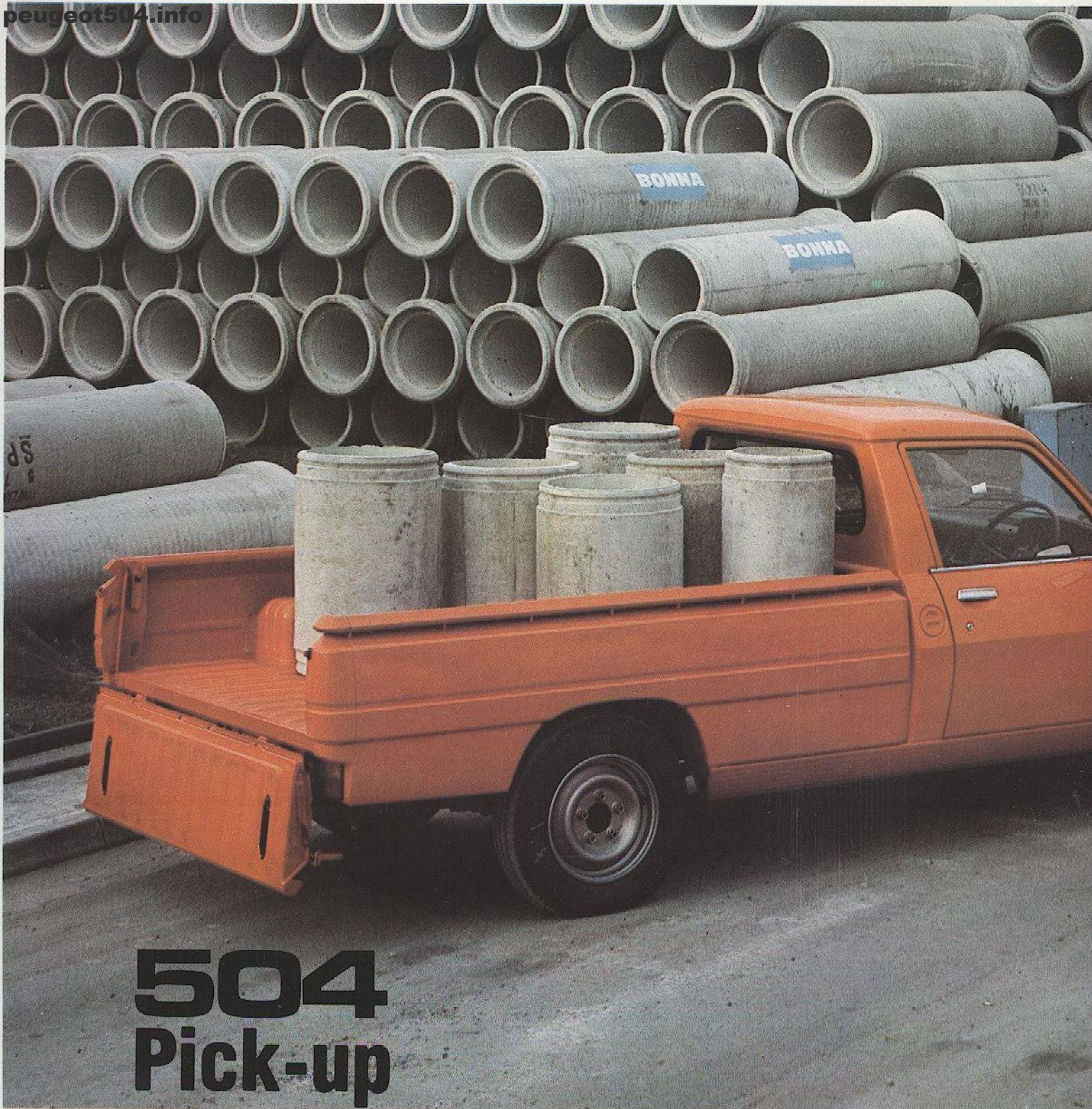




# Peugeot 504 Pick-up





# 504 Pick-up



The new 504 Pick-Up. Rugged enough to take all the work you want to give it. Just as tough and reliable as the world-famous saloons and estate models from which it is derived – just as comfortable, and great value for money.

The stylish lines of the 504 Pick-Up may deceive you, but it is a large capacity, hard working vehicle, ready to adapt to all kinds of commercial tasks. With canvas tilt\*, the 504 Pick-Up has the same covered load capacity as a large van, but with the versatility only the Pick-Up can give.

Whether performance or economy is your priority, you have the choice of two power units (1618 cc petrol or 1948 cc diesel), but both engines have been developed to give you solid power and smooth low speed torque to cope with a load of up to

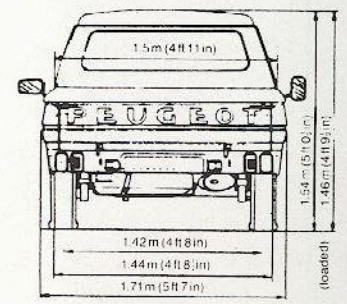
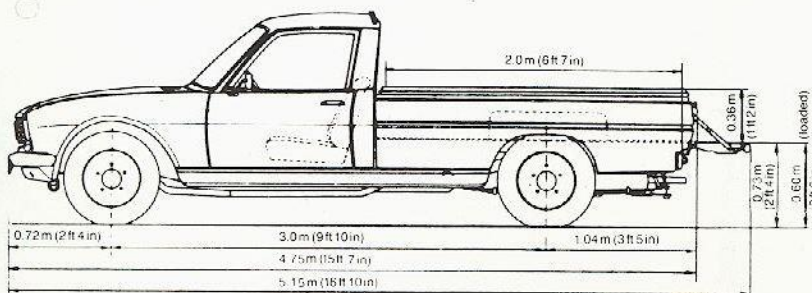
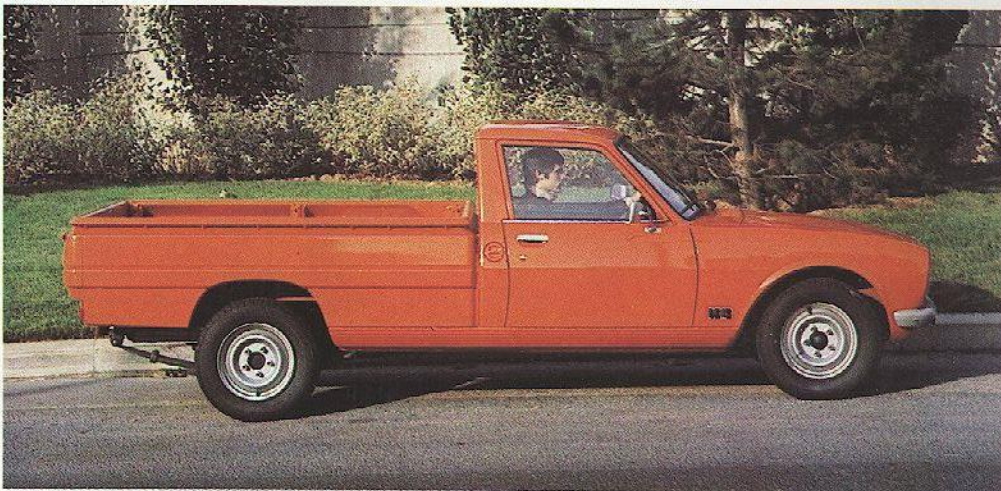
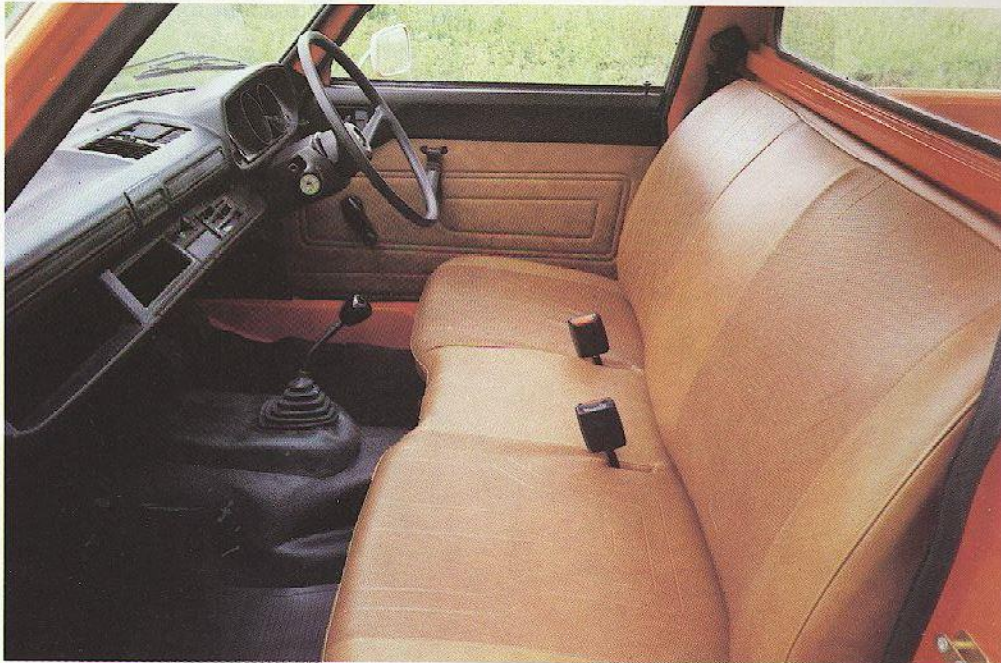
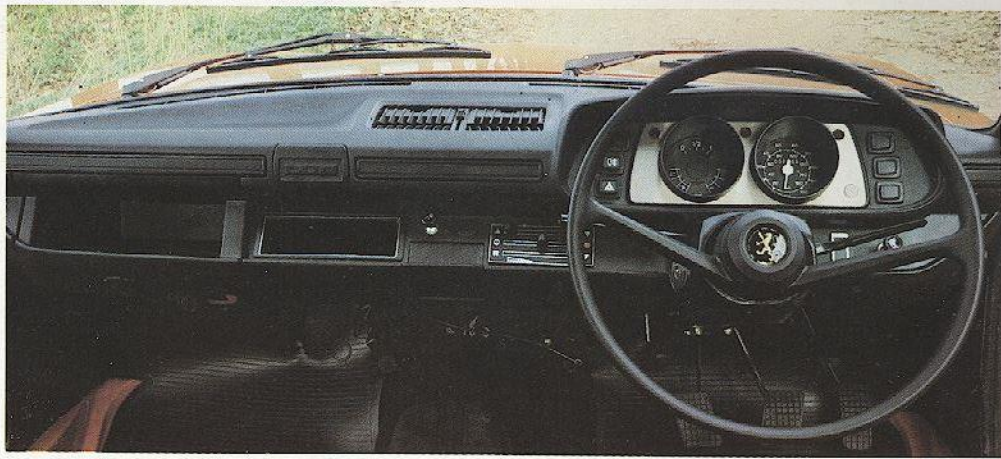
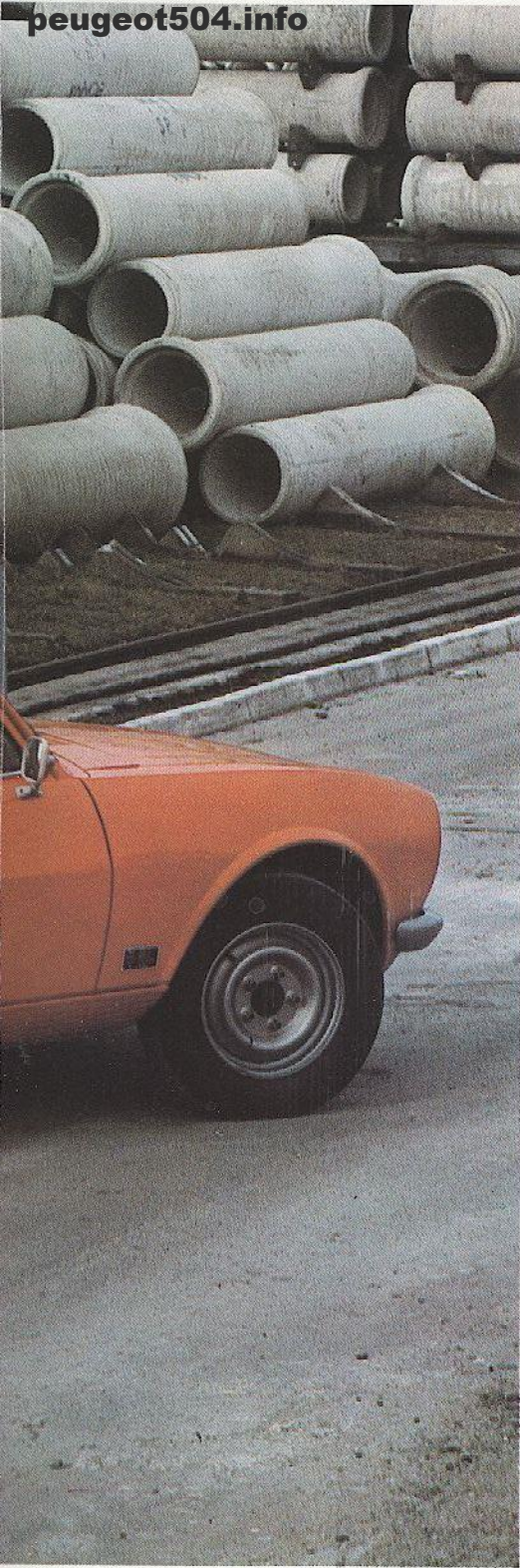
2590 lbs (1175 kg). With 504 suspension, the ride is just as good with a heavy load, and the new Limited-Slip differential helps you keep moving when the going gets difficult.

Inside, there's the level of comfort you would expect from a saloon, but adapted to suit the commercial world. There's room in the wide cab for three passengers, including the driver, on a bench seat upholstered in hard-wearing Tepluxe. There's also the same heating and ventilation system used on the 504 Saloon, which includes a variable speed fan. The dashboard also incorporates a radio mounting point (pre-wired) and a handy storage compartment.

The new 504 Pick-Up – rugged, reliable and comfortable.

\*Optional accessory.







# Peugeot 504 Pick-up

## SPECIFICATION.

### Bodywork and General Information

**Body**  
Integral all-steel body with electrophoretic anti-corrosion treatment.  
3-person bench seat.

#### Dimensions

Overall length: 15ft 6in (4.74m)  
Overall width: 5ft 7in (1.71m)  
Height unladen: 5ft 0½in (1.54m)  
Height laden: 4ft 9in (1.46m)  
Wheelbase: 9ft 10in (3.00m)  
Load floor length (with tailgate up): 6ft 7in (2.00m)  
Box side height: 1ft 2in (0.36m)  
Box width: 4ft 11in (1.50m)  
Width between wheel arches: 3ft 7¼in (1.11m)  
Loading height from ground: 2ft 4¼in (0.73m)

**Fuel Tank**  
Capacity: 14 gallons (64 litres)

**Weight**  
Kerb weight: petrol 2590 lbs (1175 kg)  
diesel 2723 lbs (1235 kg)  
Max. laden weight: petrol 5345 lbs (2425 kg)  
diesel 5479 lbs (2485 kg)

Max. payload (includes driver and 1175 kg evenly distributed): 2525 lbs (1250 kg)

**Towing**  
Max. towing capacity (trailer with brakes, within limits of max. rolling weight): 3086 lbs (1400 kg)  
Max. rolling weight: petrol 7661 lbs (3475 kg)  
diesel 7793 lbs (3535 kg)

### Mechanical

**Gearbox**  
Synchromesh gearbox with four forward speeds and reverse.  
Floor-mounted gear lever. Diaphragm-type clutch with ball-bearing thrust.

**Suspension**  
Front: independent coil springs with Peugeot double-acting shock absorbers and anti-roll bar.  
Rear: longitudinal leaf springs.

**Rear Axle**  
Limited Slip Differential.

**Brakes**  
Dual circuit braking with Front disc, rear drum, servo assistance.

**Steering**  
Rack and pinion steering. Overall turning circle: 39 ft (12 m).

**Electrical system**  
12 volt electrical system with alternator.

**Tyres**  
185 x 15 radial tyres on 5J x 15 steel wheels with five-stud fixing.

### Engines

4-cylinder engine mounted longitudinally driving the rear wheels. Cast iron block. Aluminium cylinder head (hemispherical combustion chambers on petrol models). Removable wet cylinder liners. 5-bearing forged steel crankshaft. Push-rod operated overhead valves. Diesel engines equipped with rapid pre-heat spark plugs.

	Petrol	Diesel
Bore/stroke:	84 x 73	88 x 80
Cubic capacity:	1618 cc	1948 cc
Compression ratio:	7.6/1	21.8/1
Max. power (DIN):	62 bhp at 5200 rpm	49 bhp at 4500 rpm
Max. torque (DIN):	88.2 ft lbs (12.2 mkg) at 2500 rpm	79.6 ft lbs (11.0 mkg) at 2100 rpm
Max. speed (without canvas tilt):	81 mph (130 km/h)	72 mph (115 km/h)
Max. slope when starting in 1st gear (vehicle loaded):	17.5% (1 in 6)	14% (1 in 7)

### Equipment

Equipment includes the following items:-  
Radio mounting point.  
Variable speed heater/demister fan.  
Twin door-mirrors.  
Ashtray.  
Rubber floor covering.  
Seat belts.  
Twin sunvisors.  
Interior light.  
Water level warning lamp.  
Adjustable seat.  
A canvas tilt is available as an option.

Take a test drive at your local Peugeot Dealer.

CRAZE BROS. LTD.  
SOUTHAMPTON ROAD  
SALISBURY, WILTS.  
SP1 2LE  
SALISBURY 5268/9

Peugeot Automobiles UK Ltd.,  
333 Western Avenue, London W3 0RS.



**PLEASE NOTE:**  
Every endeavour has been made to ensure that the information contained in this brochure was accurate at the time of going to press. Peugeot Talbot however, reserve the right, while preserving the essential characteristics of the models described and illustrated in this brochure, to introduce at any time modifications, changes of detail, equipment or accessories as may be considered necessary. The brochure will be updated from time to time but in order to avoid any misunderstanding, any person interested in purchasing a vehicle should enquire of an authorised Peugeot dealer as to whether there have been any material alterations, since the date of the issue of this brochure. Sept 1981