



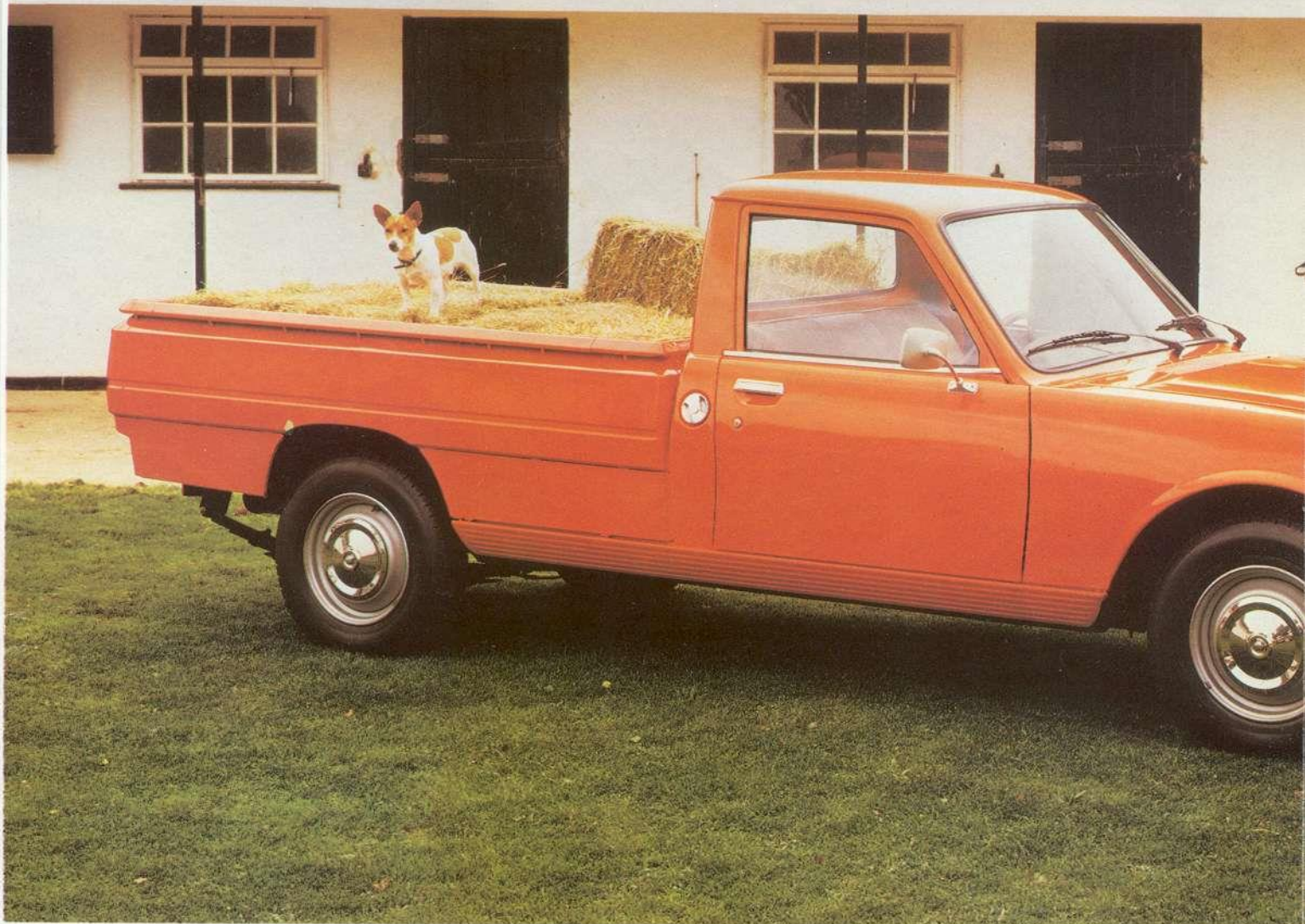
Your Local  
**PEUGEOT TALBOT**  
MAIN DEALER  
**H. F. EDWARDS & Co. Ltd.**  
32-38 UPPER HIGH STREET  
EPSOM 25611



# PEUGEOT 504

## Pick-up

ENTRATA  
2000



*The new 504 Pick-Up. Rugged enough to take all the work you want to give it. Tough, reliable, comfortable, and great value for money.*

*The stylish lines of the 504 Pick-Up may deceive you, but it is a large capacity, hard working vehicle, ready to adapt to all kinds of commercial tasks. With canvas tilt,\* or fibre glass hard top, the 504 Pick-Up has the same covered load capacity as a large van, but with the versatility only the Pick-Up can give.*

*Whether performance or economy is your priority, you have the choice of two power units (1796cc petrol or 2304cc diesel), but both engines have been developed to give you solid power and smooth low speed torque to cope with a load of up to 2810 lbs (1275 kg) including driver. With 504 suspension, the ride is just as good with a heavy load, and the Limited-Slip*

*differential helps you keep moving when the going gets difficult.*

*Inside, there's the level of comfort you would expect from a saloon, but adapted to suit the commercial world. There's room in the wide cab for three passengers, including the driver, on a bench seat upholstered in hard-wearing Tepluxe.*

*The saloon style fascia incorporates a clock, lockable glove box and a radio mounting point. The heating and ventilation system includes a variable speed blower.*

*Outside, a reversing lamp and a locking fuel filler cap are standard equipment. A ladder rack/cab protection bar is also available as an optional accessory. The new 504 Pick-Up – rugged, reliable and comfortable.*

*\*Optional accessories*



# SPECIFICATION.

## Bodywork and General Information

**Body**  
Integral all-steel body with electrophoretic anti-corrosion treatment.  
3-person bench seat.

<b>Dimensions</b>		
Overall length:	4.75m	(15' 7")
Overall width:	1.71m	(5' 7")
Height unladen:	1.54m	(5' 0½")
Height laden:	1.46m	(4' 9")
Wheelbase:	3.00m	(9' 10")
Load floor length (with tailgate up):	2.00m	(6' 7")
Box side height:	0.36m	(1' 2")
Box width:	1.50m	(4' 11")
Width between wheel arches:	1.11m	(3' 7¾")
Loading height from ground – unladen:	0.73m	(2' 4¾")

<b>Fuel Tank</b>	
Capacity:	14 gallons (64 litres)
<b>Weight</b>	
Kerb weight:	petrol 1240kg (2734lb) diesel 1320kg (2910lb)
Max. laden weight:	petrol 2515kg (5545lb) diesel 2595kg (5720lb)
Max. payload	1275kg (2810lb)
<b>Towing</b>	
Max. towing capacity (trailer with brakes, within limits of max. rolling weight):	1400kg (3086lb)
Max. rolling weight: petrol	3715kg (8190lb)
diesel	3795kg (8366lb)

**IMPORTANT:** Whilst nominal payload figures are included for guidance, vehicle payload will depend on the individual gross vehicle weight – less an allowance for the weight of the particular vehicle body, any optional equipment fitted and crew members carried. Please check with your Dealer for precise details concerning vehicle payload capacity.

## Mechanical

**Gearbox**  
Synchromesh gearbox with four forward speeds and reverse.  
Floor-mounted gear lever. Diaphragm spring-type clutch with ball-bearing thrust.

**Suspension**  
Front: independent coil springs with Peugeot double-acting shock absorbers and anti-roll bar.  
Rear: longitudinal leaf springs.

**Rear Axle**  
Limited Slip Differential.

**Brakes**  
Dual circuit braking with Front disc, rear drum, servo assistance.

**Steering**  
Rack and pinion steering. Overall turning circle: 12m (39ft).

**Electrical System**  
12 volt electrical system with alternator.

**Tyres**  
185 x 15 radial tyres on 5J x 15 steel wheels with five-stud fixing.

## Engines

4-cylinder engine mounted longitudinally driving the rear wheels. Cast iron block. Aluminium cylinder head (hemispherical combustion chambers on petrol models). 5-bearing forged steel crankshaft. Push-rod operated overhead valves.  
Diesel engines equipped with rapid pre-heat spark plugs.

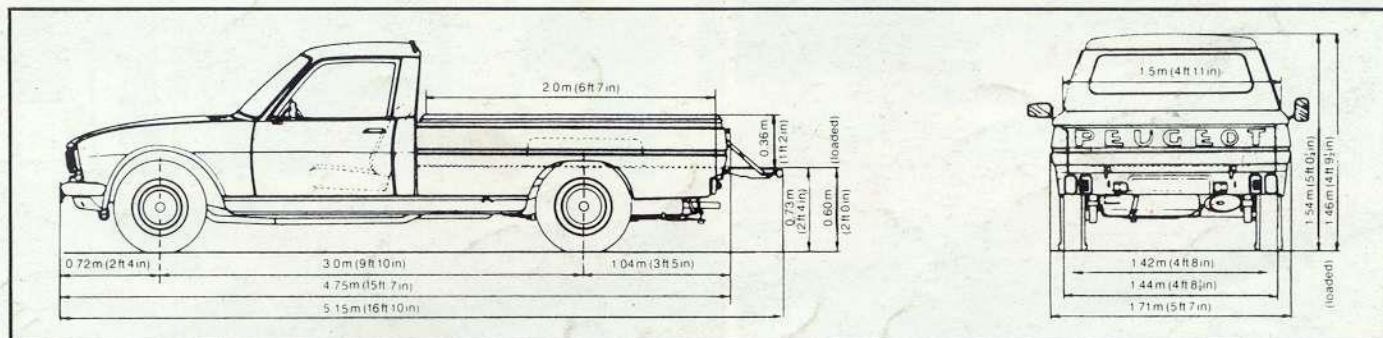
	Petrol	Diesel
Bore/stroke:	84 x 81	94 x 83
Cubic capacity:	1796	2304
Compression ratio:	8.8:1	22.2:1
Max. power (DIN):	58.8 kW (78.8 bhp) at 5500 rpm	51.5 kW (69.0 bhp) at 4500 rpm
Max. torque: (DIN)	14.5 mkg at 2500 rpm	13.4 mkg at 2000 rpm

## Equipment

Standard Equipment includes the following items: –

- Lockable Glove Box
- Radio mounting point
- Courtesy operated interior light
- Twin door mirrors
- Dipping interior rear view light
- Clock
- Door armrests
- Adjustable seat
- Inertia reel seat belts for driver and passenger
- Ashtray

- 2 speed electric screen wipe/wash with intermittent wipe
- Reversing lamp
- Heater/demister with variable speed blower
- Chromed wheel finishers
- Locking fuel filler cap
- Rubber floor covering
- Water level warning lamp
- Rapid pre-heat plugs (diesel)
- Twin sunvisors



Talbot Motor Company Ltd  
London Road Ryton on Dunsmore  
Coventry CV8 3DZ

Every endeavour has been made to ensure that the information contained in this brochure was accurate at the time of going to press. Peugeot Talbot however, reserve the right, while preserving the essential characteristics of the models described and illustrated in this brochure, to introduce at any time modifications, changes of detail, equipment or accessories as may be considered necessary. The brochure will be updated from time to time but in order to avoid any misunderstanding, any person interested in purchasing a vehicle should enquire of an authorised Peugeot dealer as to whether there have been any material alterations, since the date of the issue of this brochure. Oct. 82.