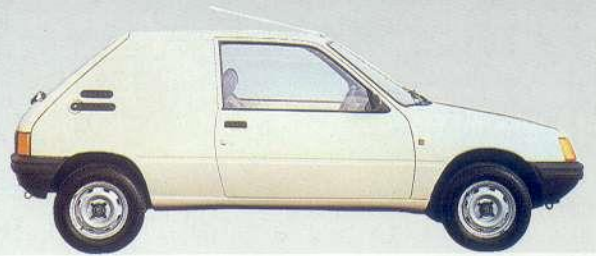




PEUGEOT



Vans
and Pick-Up







Access to the 42.4 cu ft load space is extremely convenient because of the high-lifting tailgate, top-hinged with 6 ft standing headroom underneath. Safety and security are not neglected either. A rear fog lamp, twin reversing lamps, inertia reel seat belts, heated rear window and a lockable fuel filler cap are all specified as standard.

The interior equipment is very impressive, with a comprehensive instrument and warning light array, plus radio pre-equipment. The rake-adjustable seats with head restraints are trimmed in tough practical vinyl, and the cab floor is carpeted. Highly effective heating and ventilation is built in.



205

Standard Van

With the new Peugeot 205 Van you get the best of both worlds. First, it is a supremely practical small carrier with 42.4 cu ft of load space. The payload capacity including crew and equipment is 415 kg (915 lb) with the 1124cc petrol engine, and 400 kg (881 lb) with the 1769cc diesel. With either power unit a 4-speed transmission is specified in the Standard version.

The 205 Van has interior styling and equipment comparable with a modern small car, and its handling is equally impressive. The engineering comes from the ultra-successful 205 range, so the performance, reliability and servicing are the same. In particular the operating economy is outstanding.

The 205 Van is built to last, having a 6-year supplementary warranty following the 10 stage protective treatment applied during manufacture.

The load compartment has a flat floor with a vinyl/felt covering, and there are two load-securing lugs at each side. There's a load-space lamp too, plus a half-height bulkhead behind the rake-adjustable cab seats. The 1124cc petrol engine delivers 50 PS (36 kW) at 4800 rpm while there's 60 PS (43.5 kW) available from the husky and unbelievably smooth 1769cc diesel. With either unit the 205 Van offers lively performance and exceptional economy.

For sheer all-round work rate the 205 Standard van sets yardsticks for others to try to match.





Front wheel drive and transverse torsion bar rear springing results in a low flat floor unobstructed by suspension unit intrusion. Ultra-slim rear wheel arches leave a minimum load floor width of 43.0 ins. Tailgate wash/wipe is included in the GL specification.

There are saloon car equipment levels: twin sun visors, cloth upholstery, clock, cigar lighter and push button radio with door-mounted speakers and inertia reel seat belts. Rheostat heater blower and full face level ventilation. Comprehensive instrumentation and warning light display. 5-speed gearboxes on the petrol and diesel GL models.

205

GL Van

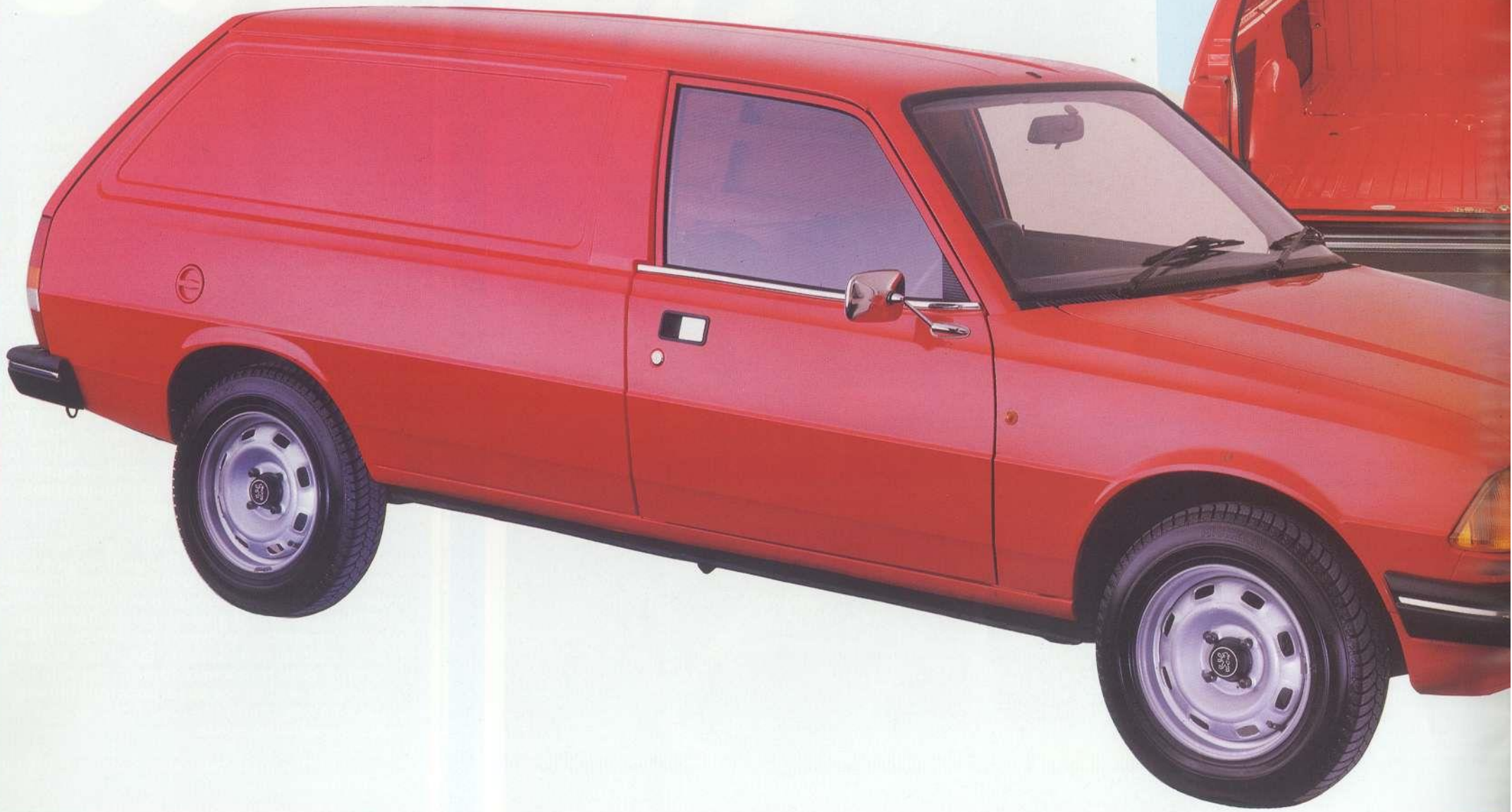
The 205 GL van improves on the Standard version's comfort and practicality. There are interior refinements to give driver and passenger an environment even more like a car; cloth upholstery, door armrests, and a door pocket on the driver's side. The GL specification also includes a trip mileage recorder and a quartz clock plus a cigar lighter and a push button radio with twin door-mounted speakers.

Externally the tailgate is fitted with wash/wipe for added safety.

The major mechanical specification change is in the transmission. Both the petrol and diesel GL models have a 5-speed gearbox. This makes them even quieter and smoother on inter-city journeys as well as more flexible in urban/mixed traffic. And the payloads are still exceptional; 410 kg (904 lb) with the petrol engined model and 395 kg (870 lb) with the diesel.

In all other respects the GL shares the features and benefits of Peugeot engineering and attention to detail built into the Standard van. Front wheel drive to maximise the usable interior space and give first class handling. Load-adjustable halogen headlamps and a laminated screen. Superb 'large car' suspension comfort with transverse torsion bar rear springing and shock absorbers ingeniously tucked away under the load floor, to maximise income-earning space.

For the small business, buying a 205 van is good business.





The comprehensively equipped fascia and centre console are complemented by colour keyed door trim and textured vinyl seats. The driver's and passenger's seats are adjustable for rake. For additional safety, a seat height load retaining bulkhead is fitted behind the front seats as standard equipment.

The low-drag front end styling with integral spoiler results in remarkable fuel economy and excellent performance. Very easy access to 56.5 cu ft of load space. The huge tailgate lifts on gas-filled struts.



305

Standard Van

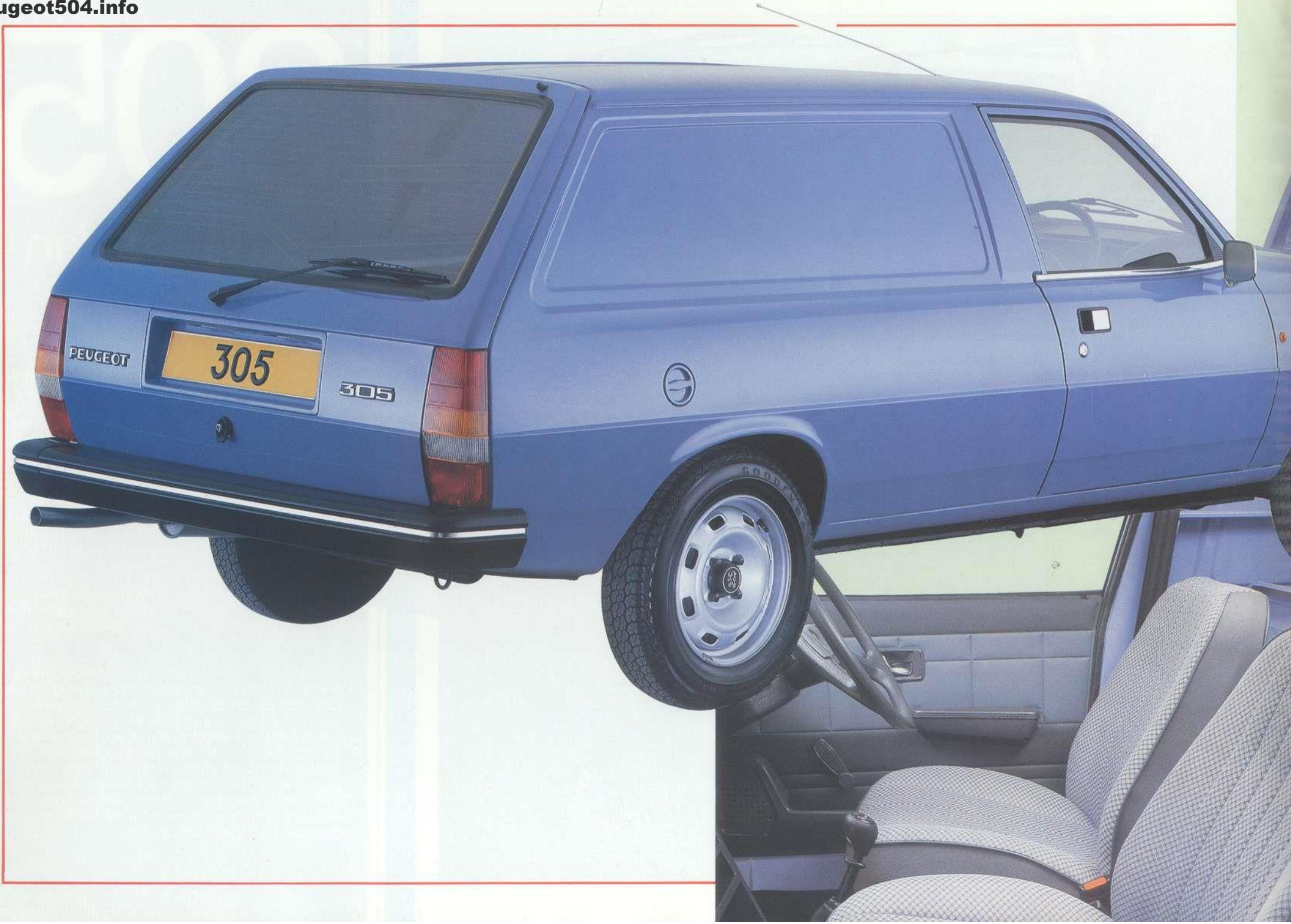
When you drive a Peugeot 305 Van you enjoy its saloon car comfort. When you use the van for business you appreciate its tough practical load carrying qualities.

You have a choice of 1472cc 74 PS (55kW) petrol engine with electronic ignition, or the 1905cc 65 PS (48kW) diesel, both driving through a 4-speed all synchromesh gearbox to the front wheels. This makes for tenacious road holding and easy cornering. The 305 works like a van and drives like a car.

Including driver and any passenger or equipment carried the petrol engine van will cope with a payload of 470 kg (1036 lb) and the diesel 510 kg (1124 lb). The loadspace is a useful 56.5 cu ft.

Choice of Alpine White, Cherry or Wedgewood Blue paint all with Anthracite trim, makes the 305 van an attractive and distinctive asset to any business. Quality and style at a very inviting price.

All Peugeot 305 vans benefit from the same 6-year supplementary warranty as Peugeot cars. Cathodic electrophoretic process, bitumen wax injection of doors and hollow sections, mastic cords between sheet metal joints to ensure a watertight seal, PVC anti-chipping compound applied to wheel arches, front and rear lower panels and sills. Certain body items which are difficult to protect and liable to corrosion are made of zinc plated or galvanised steel. When you buy a Peugeot nothing is left to chance.





Saloon car features for driver and passenger. Cloth faced seat trim. Push button radio with twin speakers. Door pockets. Twin sunvisors. Soft rim steering wheel. The elegant fascia has full warning light display and clear easy to read instruments.

Loading is made easy by the low floor, a result of front wheel drive layout. The top hinged tailgate allows very easy access.

The rugged rear suspension has been specially designed to minimise intrusion into the load area resulting in a big useful flat floor, with width between wheel arches a full 1.14 metres.



305

GL Van

The Peugeot 305 GL Van has extra features that improve even on the exceptional value of the Standard Van. More comfort – cloth faced seats. More relaxation and safety – push button radio and tailgate wash/wipe. More colour choice – Burgundy and Antelope Beige in addition to the Standard Van colours. More flexibility on the diesel model which has a 5-speed synchromesh gearbox.

They all add up to make the handsome and versatile 305 GL Van a distinctive addition to your business. A very practical way to keep things moving. Compare these features with anything else at the price.

Dual circuit braking with load compensator and servo assistance. Front wheel drive for exceptional roadholding and easy cornering. Laminated windscreen. Heated rear screen. 2-speed windscreen wash/wipe. Adjustable rake on both seats. Half height load protection bulkhead behind the front seats. Chrome door mirrors. Courtesy operated interior light. Load compartment light. Side repeater flashers. And many more.

But the real test is to come and see for yourself. Check the measurements, the capacity, the usefulness for the work you do. Whether you favour petrol or diesel engines Peugeot can offer you extra performance, ease of maintenance, and the reliability you need to keep your business on the road.





Inviting saloon comfort adapted to the practical realities of a tough working life. The adjustable bench seat, upholstered in hard-wearing Tepluxe, offers seating for driver and two passengers. The tough practical rubber floor covering is non slip and easy to clean.

From the driver's seat all the controls come

easily to hand. The saloon style fascia incorporates a clock. There's a lockable glovebox and a radio mounting point. Instruments are easy to see and read and warning lights keep the driver fully informed. The heating and ventilating system includes a variable speed blower. A laminated windscreen is standard equipment.



504

Pick-Up

The robust 504 Pick-Up makes very practical business sense. Economical and robust, it combines the versatility of a powerful load carrier with the comfort of a saloon.

It will carry a payload of 1265 kg (2788 lb) including driver. The load platform is 2.0 metres long and 1.5 metres wide giving a useable floor area of 2.7 square metres. With the option at extra cost of a fibreglass hardtop you have the load capacity of a big van with the adaptability only the Pick-Up provides.

Safety and ease of handling are key considerations. Dual circuit braking with servo assistance, discs front and drums rear. The rear axle has a limited-slip differential to help when the going is tough. 2 speed windscreen wash/wipe, reversing lamp, locking fuel cap, and a ladder rack/cab protection frame with hinged ladder retainers are standard features.

Choice of two powerful engines specially developed to give solid power and smooth low speed torque to cope with loads up to 1265 kg (2788 lb) including the driver and any passengers or equipment carried. 1796cc petrol with transistorised breakerless ignition or 2304cc diesel with rapid pre-heat plugs. Both have 4-speed manual synchromesh gearbox.

Whatever your business, however tough the jobs you ask it to do, you can be sure that the rugged, reliable 504 Pick-Up will pay its way. Come and check out the features, try it for size – the 504 will measure up to your needs.

205 Standard and GL Vans

Specification	205 Standard Van		205 GL Van		General Equipment		
	Petrol	Diesel	Petrol	Diesel		205 Standard	205 GL
Engine							
Cubic capacity (cc)	1124	1769	1124	1769	Speedometer	●	●
Max. Power (DIN)	36 kW (50 PS) @ 4800 rpm	43.5 kW (60 PS) @ 4600 rpm	36 kW (50 PS) @ 4800 rpm	43.5 kW (60 PS) @ 4600 rpm	Trip recorder		●
Max. Torque (DIN)	8.7 mkg @ 2800 rpm	11.0 mkg @ 2500 rpm	8.7 mkg @ 2800 rpm	11.0 mkg @ 2500 rpm	Fuel gauge	●	●
Compression Ratio	9.7:1	23:1	9.7:1	23:1	Water temperature warning lamp	●	●
Transistorised Breakerless Ignition	●		●		Clock		●
Transmission	Front wheel drive, 4-Speed synchromesh, single plate diaphragm spring clutch		Front wheel drive, 5-Speed synchromesh, single plate diaphragm spring clutch		Ignition/steering column lock	●	●
Suspension					Column switches for indicators	●	●
Front	Independent – Coil Springs with anti roll bar		Independent – Coil Springs with anti roll bar		Horn	●	●
Rear	Independent – Torsion bars with trailing arms		Independent – Torsion bars with trailing arms		Headlamp main beam/dip	●	●
Brakes	Hydraulic Dual Circuit with pressure compensator valves		Hydraulic Dual Circuit with pressure compensator valves		Windscreen wipers (2-speed)/wash	●	●
Front	Disc		Disc		Rheostat heater blower	●	●
Rear	Drum		Drum		Cab floor carpet	●	●
Steering	Rack and Pinion		Rack and Pinion		Face level ventilation	●	●
Turning Circle (Between kerbs)	9.9 m (32.5 ft)		9.9 m (32.5 ft)		Twin sunvisors	●	●
Electrical System	Alternator Charging, 12V		Alternator Charging, 12V		Ashtray	●	●
Wheels and Tyres	Pressed Steel Wheels with 145 SR 13 Radial Ply Tyres		Pressed Steel Wheels with 145 SR 13 Radial Ply Tyres		Laminated windscreen	●	●
Dimensions					Dipping rear view mirror	●	●
Overall length	3.70 m (12 ft 2 in)		3.70 m (12 ft 2 in)		Heated rear window	●	●
Overall width	1.57 m (5 ft 2 in)		1.57 m (5 ft 2 in)		Reversing lamps	●	●
Height unladen	1.37 m (4 ft 6 in)		1.37 m (4 ft 6 in)		Rear fog lamp	●	●
Wheelbase	2.42 m (7 ft 11 in)		2.42 m (7 ft 11 in)		Load adjustable halogen headlamps	●	●
Load floor length	1.37 m (4 ft 6 in)		1.37 m (4 ft 6 in)		Inertia reel seat belts	●	●
Maximum interior height	0.88 m (2 ft 10 1/2 in)		0.88 m (2 ft 10 1/2 in)		Rake adjustable front seats	●	●
Maximum load floor width	1.29 m (4 ft 2 1/2 in)		1.29 m (4 ft 2 1/2 in)		Cloth faced seat trim		●
Width between wheel arches	1.09 m (3 ft 7 in)		1.09 m (3 ft 7 in)		Vinyl seat trim	●	
Fuel Tank					Head restraints	●	●
Capacity	50 litres (11 gallons)		50 litres (11 gallons)		2- Exterior door mirrors	●	●
Weights	Petrol	Diesel	Petrol	Diesel	Courtesy operated interior light	●	●
Kerb weight (excluding driver)	780 kg (1719 lb)	870 kg (1918 lb)	785 kg (1730 lb)	875 kg (1929 lb)	Load compartment light	●	●
Gross vehicle weight	1195 kg (2634 lb)	1270 kg (2799 lb)	1195 kg (2634 lb)	1270 kg (2799 lb)	Load floor mat	●	●
Payload (including driver)	415 kg (915 lb)	400 kg (881 lb)	410 kg (904 lb)	395 kg (870 lb)	Half height load protection bulkhead behind frontseats	●	●
Permissible Axle Loads at GVW					Door armrests		●
Front	620 kg (1366 lb)	720 kg (1587 lb)	620 kg (1366 lb)	720 kg (1587 lb)	Tailgate wash/wipe		●
Rear	630 kg (1388 lb)	630 kg (1388 lb)	630 kg (1388 lb)	630 kg (1388 lb)	Driver's door pocket		●
Max. towing capacity (trailer with brakes within limit of max. rolling weight)	800 kg (1763 lb)	900 kg (1984 lb)	800 kg (1763 lb)	900 kg (1984 lb)	Push button radio with twin speakers		●
Max. rolling weight	1895 kg (4176 lb)	2070 kg (4562 lb)	1895 kg (4176 lb)	2070 kg (4562 lb)			
Load space capacity	42.4 cu ft		42.4 cu ft		Important: Whilst nominal payload figures are included for guidance, vehicle payload will depend on the individual gross vehicle weight – less an allowance for the weight of the particular vehicle body, any optional equipment fitted and crew members carried. Please check with your Dealer for precise details concerning vehicle payload capacity.		

305 Standard and GL vans

Specification	305 Standard Van		305 GL Van		General Equipment	305 Standard	305 GL
	Petrol	Diesel	Petrol	Diesel			
Engine							
Cubic capacity (cc)	1472	1905	1472	1905	Speedometer	●	●
Max. Power (DIN)	55 kW (74 PS) @ 6000 rpm	48 kW (65 PS) @ 4600 rpm	55 kW (74 PS) @ 6000 rpm	48 kW (65 PS) @ 4600 rpm	Odometer	●	●
Max. Torque (DIN)	11.8 mkg @ 3000 rpm	12.2 mkg @ 2000 rpm	11.8 mkg @ 3000 rpm	12.2 mkg @ 2000 rpm	Fuel gauge	●	●
Compression Ratio	9.2:1	23.5:1	9.2:1	23.5:1	Water temperature warning lamp	●	●
Transistorised Breakerless Ignition	●		●		Ignition/steering column lock	●	●
Transmission	Front wheel drive, 4-Speed synchromesh, single plate diaphragm spring clutch		Front wheel drive 4-Speed synchromesh 5-Speed synchromesh Single plate diaphragm spring clutch		Column switches for indicators	●	●
Suspension					Horn	●	●
Front	Independent – Coil Springs with anti roll bar		Independent – Coil Springs with anti roll bar		Headlamp main beam/dip	●	●
Rear	Independent – Coil Springs with anti roll bar		Independent – Coil Springs with anti roll bar		Windscreen wipers (2-speed)/wash and Intermittent wipe	●	●
Brakes	Hydraulic Dual Circuit with Load Compensator and Servo Assistance		Hydraulic Dual Circuit with Load Compensator and Servo Assistance		Heater with 3-speed blower	●	●
Front	Disc		Disc		Face level ventilation	●	●
Rear	Drum		Drum		Glovebox	●	●
Steering	Rack and Pinion		Rack and Pinion		Twin sunvisors	●	●
Turning Circle	10.85 m (35 ft 7 in)		10.85 m (35 ft 7 in)		Ashtray	●	●
Electrical System	Alternator Charging, 12V		Alternator Charging, 12V		Laminated windscreen	●	●
Wheels and Tyres	Pressed Steel Wheels with 155 SR 14 Radial Ply Tyres		Pressed Steel Wheels with 155 SR 14 Radial Ply Tyres		Dipping rear view mirror	●	●
Dimensions					Heated rear window	●	●
Overall length	4.28 m (14 ft 0 in)		4.28 m (14 ft 0 in)		Reversing lamp	●	●
Overall width	1.64 m (5 ft 4 1/2 in)		1.64 m (5 ft 4 1/2 in)		Rear fog lamp	●	●
Height unladen	1.43 m (4 ft 8 in)		1.43 m (4 ft 8 in)		Inertia reel seat belts	●	●
Wheelbase	2.62 m (8 ft 7 in)		2.62 m (8 ft 7 in)		Cloth faced seat trim		●
Load floor length	1.81 m (5 ft 11 in)		1.81 m (5 ft 11 in)		Textured vinyl upholstery	●	
Maximum interior height	0.88 m (2 ft 10 in)		0.88 m (2 ft 10 in)		Chrome door mirrors	●	●
Load aperture height	0.80 m (2 ft 7 1/2 in)		0.80 m (2 ft 7 1/2 in)		Courtesy operated interior light	●	●
Maximum load floor width	1.26 m (4 ft 1 in)		1.26 m (4 ft 1 in)		Load compartment light	●	●
Width between wheel arches	1.14 m (3 ft 9 in)		1.14 m (3 ft 9 in)		Adjustable rake driver's and passenger's seats	●	●
Loading height from ground unladen	0.52 m (1 ft 8 1/2 in)		0.52 m (1 ft 8 1/2 in)		Half height load protection bulkhead behind frontseats	●	●
Fuel Tank	50 litres (11 gallons)		50 litres (11 gallons)		Door armrests	●	●
Capacity	50 litres (11 gallons)		50 litres (11 gallons)		Tailgate wash/wipe		●
Weights	Petrol	Diesel	Petrol	Diesel	Door pockets	●	●
Kerb weight (excluding driver)	950 kg (2094 lb)	1010 kg (2226 lb)	950 kg (2094 lb)	1015 kg (2236 lb)	Push button radio with twin speakers		●
Gross vehicle weight	1420 kg (3130 lb)	1520 kg (3350 lb)	1420 kg (3130 lb)	1520 kg (3350 lb)			
Payload (including driver)	470 kg (1036 lb)	510 kg (1124 lb)	470 kg (1036 lb)	505 kg (1114 lb)			
Permissible Axle Loads at GVW							
Front	680 kg (1499 lb)	800 kg (1763 lb)	680 kg (1499 lb)	800 kg (1763 lb)			
Rear	815 kg (1796 lb)	815 kg (1796 lb)	815 kg (1796 lb)	815 kg (1796 lb)			
Max. towing capacity (trailer with brakes within limit of max. rolling weight)	1050 kg (2319 lb)		1050 kg (2319 lb)				
Max. rolling weight	2370 kg (5223 lb)	2470 kg (5443 lb)	2370 kg (5223 lb)	2470 kg (5443 lb)			
Load space capacity	56.5 cu ft		56.5 cu ft				

Important: Whilst nominal payload figures are included for guidance, vehicle payload will depend on the individual gross vehicle weight – less an allowance for the weight of the particular vehicle body, any optional equipment fitted and crew members carried. Please check with your Dealer for precise details concerning vehicle payload capacity.

504 Pick-up

Specification			General Equipment	
Engine	Petrol	Diesel	Speedometer	●
Cubic capacity (cc)	1796	2304	Odometer	●
Max. Power (DIN)	59 kW (80 PS) @ 5500 rpm	51.5 kW (70 PS) @ 4500 rpm	Fuel gauge	●
Max. Torque (DIN)	14.5 mkg @ 2500 rpm	13.4 mkg @ 2000 rpm	Water temperature warning lamp	●
Compression Ratio	8.8:1	22.2:1	Ignition/steering column lock	●
Transistorised Breakerless Ignition	●		Column switches for indicators	●
Transmission	Rear wheel drive, 4-speed synchromesh, diaphragm spring clutch, limited slip differential		Horn	●
Suspension			Headlamp main beam	●
Front	Independent coil springs, anti roll bar		Windscreen wipers (2-speed)/wash	●
Rear	Longitudinal leaf springs		Intermittent wipe facility	●
Brakes	Dual circuit servo assistance		Heater with variable speed blower	●
Front	Disc		Lockable glovebox	●
Rear	Drum		Twin sunvisors	●
Steering	Rack and Pinion		Laminated windscreen	●
Turning Circle	12 m (39 ft)		Ashtray	●
Electrical System	Alternator Charging, 12V		Dipping rear view mirror	●
Wheels and Tyres	Pressed Steel Wheels with 185 x 15 Radial Tyres		Reversing lamp	●
Dimensions			Rear fog lamp	●
Overall length	4.75 m (15 ft 7 in)		Inertia reel seat belts	●
Overall width (excluding mirrors)	1.71 m (5 ft 7 in)		Vinyl upholstery	●
Height unladen	1.54 m (5 ft 0 1/2 in)		Twin door mirrors	●
Wheelbase	3.00 m (9 ft 10 in)		Courtesy operated interior light	●
Load floor length	2.00 m (6 ft 7 in)		Bench seat adjustable fore/aft	●
Boxside height	0.36 m (1 ft 2 in)		Door armrests	●
Box width	1.50 m (4 ft 11 in)		Clock	●
Width between wheel arches	1.11 m (3 ft 7 3/4 in)		Rubber floor covering	●
Loading height from ground unladen	0.73 m (2 ft 5 in)		Water level warning lamp	●
Fuel Tank			Rapid pre-heat plugs (diesel)	●
Capacity	64 litres (14 gallons)		Locking fuel filler cap	●
Weights	Petrol	Diesel	Radio mounting point	●
Kerb weight	1250 kg (2756 lb)	1330 kg (2932 lb)	Ladder rack/load protection bar	●
Gross vehicle weight	2515 kg (5545 lb)	2595 kg (5720 lb)	Important: Whilst nominal payload figures are included for guidance, vehicle payload will depend on the individual gross vehicle weight – less an allowance for the weight of the particular vehicle body, any optional equipment fitted and crew members carried. Please check with your Dealer for precise details concerning vehicle payload capacity.	
Payload (including driver)	1265 kg (2788 lb)			
Max. towing capacity (trailer with brakes within limit of max. rolling weight)	1400 kg (3086 lb)			
Maximum rolling weight	3715 kg (8190 lb)	3795 kg (8366 lb)		

Body and Trim Colour Availability



Coral Red



Antelope Beige



Nordic Blue



Burgundy



Wedgewood Blue



Midnight Blue



Cascade Blue



Alpine White



Cherry Red

Colours reproduced may vary from the actual colours due to limitations of the printing processes used.

	PEUGEOT 205		PEUGEOT 305		PEUGEOT 504
	STD VAN	GL VAN	STD VAN	GL VAN	PICK-UP
ALPINE WHITE	●	●	●	●	●
CHERRY RED	●	●	●	●	
MIDNIGHT BLUE	●	●			
ANTELOPE BEIGE		●		●	●
BURGUNDY		●		●	
WEDGEWOOD BLUE			●	●	
CASCADE BLUE MET		SPECIAL ORDER			
CORAL RED					●
NORDIC BLUE					●
INTERIOR TRIM COLOUR	ANTHRACITE				FAWN

Anti-Perforation Treatment

For effective long-lasting resistance to the incidence and spread of perforation, the vehicles described in this brochure are subjected to a comprehensive anti-perforation process.

1. STEEL PANELS: All body parts are thoroughly degreased to remove oil deposited during the press operation and to ensure full adhesion of the protective finishes. Perforation resistant zinc or galvanised plated panels are used in vulnerable areas or areas that would be difficult to protect after assembly.

2. PHOSPHATING: This gives protection against impacts and flaking; it also improves the adhesion of the resin film in the electrophoretic bath. Some box sections are cleaned and phosphated before the body shell is assembled.

3. ELECTROPHORETIC BATH: This deposits a perforation-proofing epoxy film 15 to 20 microns thick on the whole body shell. Box sections are pierced to assure the protection of internal surfaces.

4. JOINT SEALING: Sealing between adjacent panels is assured by mastic sealing strips on the inside and outside.

During the first twelve months all Peugeot products described in this brochure are covered by an unlimited mileage warranty, including both parts and labour, together with free breakdown recovery, should it ever be needed. Vehicles used for competitions are excluded from the benefits of this warranty.

5. CRACKLE FINISH ANTI-CHIPPING COMPOUND (PVC): Oven baked, this ensures protection to the parts of the body that are subject to abrasion from road chippings and stones (the coat is 1 to 2 mm thick).

6. PRIMER: The paint undercoat includes rust-inhibiting pigments (zinc chromate) to further improve the anti-perforation protection. This special, flexible primer also has anti-chipping properties.

7. ACRYLIC LACQUER: This thermosetting paint is baked at 130°C, the fast evaporation of the solvents giving a coat with high protective quality.

8. CLEAR VARNISH: Applied on top of metallic and black paints, this gives an increased brilliance and ensures protection of the colour pigment from the corrosive elements.

9. WAX: Pressure injected into the box sections, wax protects these inner surfaces and prevents water ingress between the panels.

For details of Diplomatic and Export Sales contact Peugeot Talbot Exports, Devonshire House, 74-75 Piccadilly, London W1. Tel: 01-499 5533. It is our policy to seek to improve our vehicles continually in every way, and we reserve the right to alter specifications at any time without notice. So whilst the details set out in this brochure were correct at the time of going to press, we are unable to guarantee that no changes in specification have subsequently taken place. Before ordering a vehicle, therefore, you should check with your Peugeot Talbot dealer whether the specification has altered. Issued by - Sales Promotion Dept., Peugeot Talbot Motor Company Limited, International House, Bickenhill Lane, Birmingham.



Dealers Stamp

SIDEGATE MOTORS LTD.
ST. GEORGES RD.
GT. YARMOUTH
(0493) 52176
VAT NO. 372 9774 07

