



504 PEUGEOT



504 Saloon

The 504 Saloon range: "GL" – "TI" – "L" – enjoys a long standing reputation for reliability, strength and high mileage performance: these are the basic qualities of the 504. But whether in town or on the open road, you will soon discover that there are many more qualities, some of which have enabled the 504 to win numerous prizes in the big international rallies.

- powerful and responsive oversquare in-line four cylinder engine
- smooth and precise gear change

- excellent road holding, whatever the road surface thanks to front and rear anti-roll bars
- superb suspension with double acting hydraulic shock-absorbers
- exceptionally safe dual circuit braking system

The 504 offers more than ample room for five people and an extremely high level of standard equipment and comfortable, carefully designed seats add to the success of this long lasting, world famous range.

GL "Grand Luxe" – TI "Tourisme Injection" – L "Luxe" – three outstanding models from which to choose.







504 GL

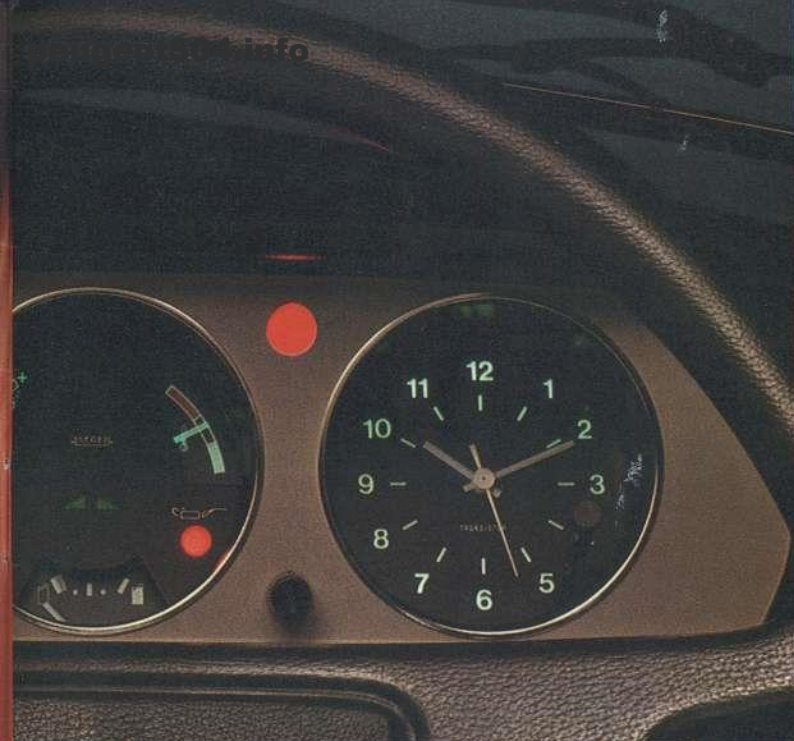
The 504 GL is a comfortable, unostentatious car and its innumerable qualities have made it a successful and world famous model. It is Europe's classic 2 litre saloon.

Test the 504 GL to discover the meaning of driving pleasure. But you may be surprised by the ease of handling of the 504 in town traffic with its twin choke carburettor for greater power; just when you need it.

The 504 is a car which offers the perfect combination of performance, in safety and comfort.

It's the ideal long distance tourer; the flexible 96 bhp engine is unflagging despite mile after mile of high speed motoring and the superbly soft ride and deep comfortable seats ensure that passengers arrive fresh and relaxed at the journey's end.





A quick glance at the interior of the GL will demonstrate the emphasis Peugeot place on refinement, harmonious surroundings and comfort.

You will discover:

- a very spacious five seater car
- deep comfortable bucket seats
- adjustable front seat backs which recline completely
- adjustable head restraints and wide arm rests
- floor mounted gear lever
- inertia reel safety belts
- two speed wipers and electric washers
- laminated screen and heated rear window and a spacious 19.3 cu.ft. boot.

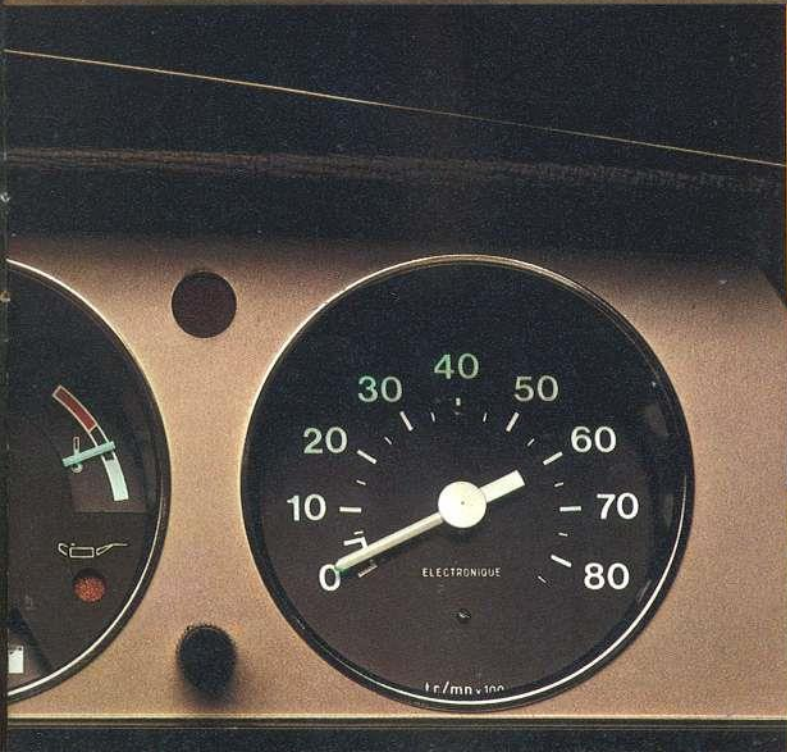
The equipment of the GL makes it both elegant and functional. Metallic paint finish and automatic transmission are optional.



504 *TI*

What makes the TI special:

- the reserve of power of its injection engine
- 106 bhp at 5,200 rpm and a top speed of 108 mph
- the responsive and quick acceleration and precise gear change for completely easy and safe overtaking
- the smoothness of precision engineering
- the long journeys which seem so short
- the economical fuel consumption
- the outstandingly efficient injection engine
- the electronic rev. counter which ensures a constant watch on the engine
- the power assisted steering which gives excellent driving precision and astonishing handling capabilities
- the electrically operated front windows
- the sliding metal sunshine roof
- the halogen headlamps which cut a clear path through the darkest night and the thickest fog.





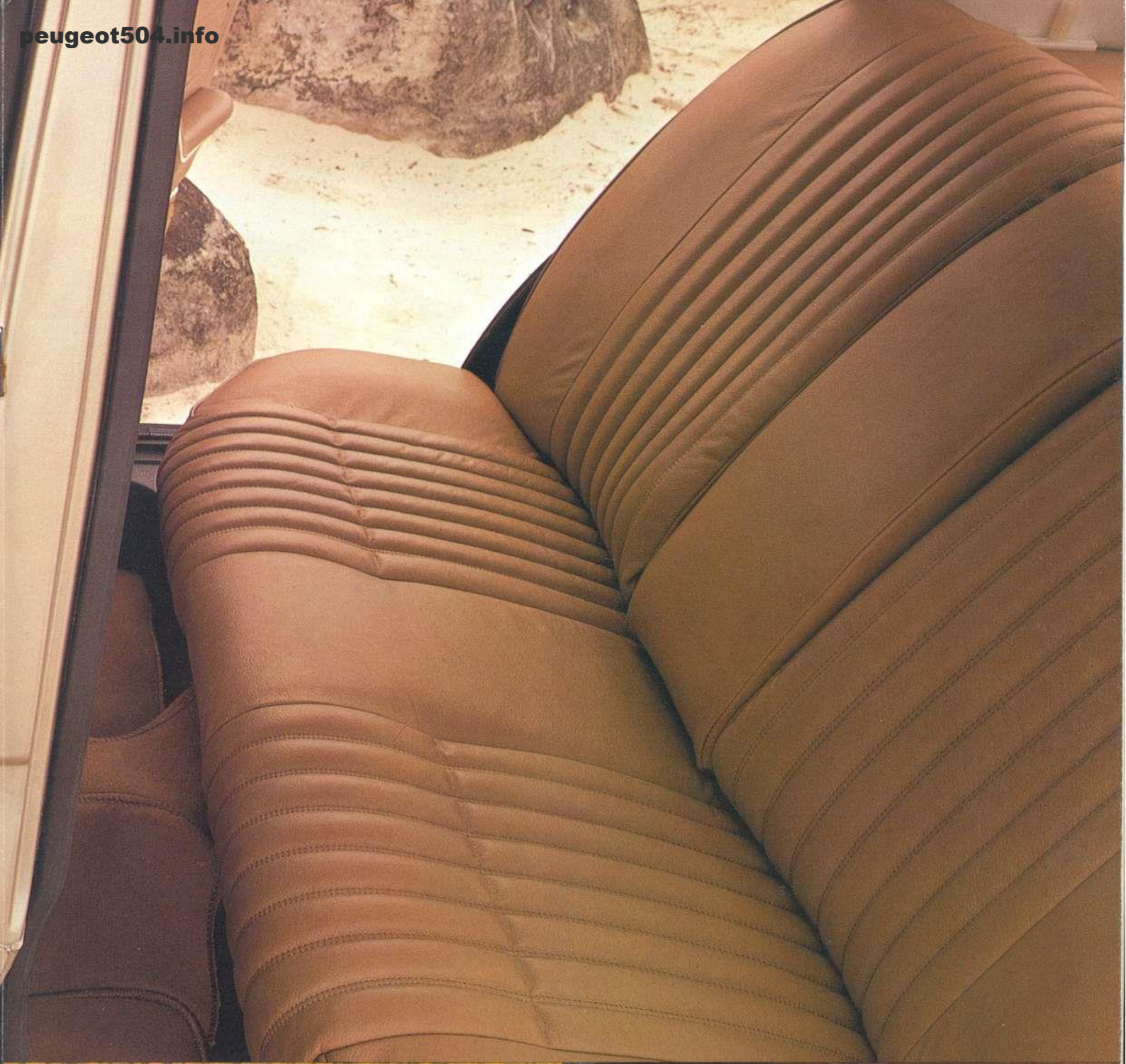
504 **GL & TI**

Take a look inside the 504 GL and TI. You will find they are luxuriously equipped and finished to the highest standards.

Reclining seats, fold down central arm rest on the rear seat, soft cloth upholstery.

And for safety, child-proof locks on the rear doors, laminated windscreen and collapsible steering column. Everything inside the 504 has been designed for your comfort and well-being.

The 504 GL and TI are already fitted with most items as standard including a sliding sunshine roof. However, metallic paint finish and automatic transmission are available should you feel you require a dash of added luxury.





504 L

The 504 L offers you all the qualities of strength, safety and reliability that you have come to expect from a Peugeot 504.

Powered by an 1800 cc unit, the 504 L runs on 2 star petrol returning up to 36 mpg* with a top speed of 96 mph.

As with its larger engined sisters the GL and TI, the 504 L has superb handling characteristics. Fitted with rear stabiliser bar and double

acting shock absorbers, the ride and cornering capabilities have to be experienced to be fully appreciated.

Peugeot quality is to be found inside too. Deep, fully reclining front seats, cloth upholstery, thick pile carpet and room for five adults to travel in complete comfort. The level of equipment is also comprehensive: heated rear window, reversing lights, cigarette lighter, hazard warning lights, two speed fan, steering wheel lock and laminated windscreen.

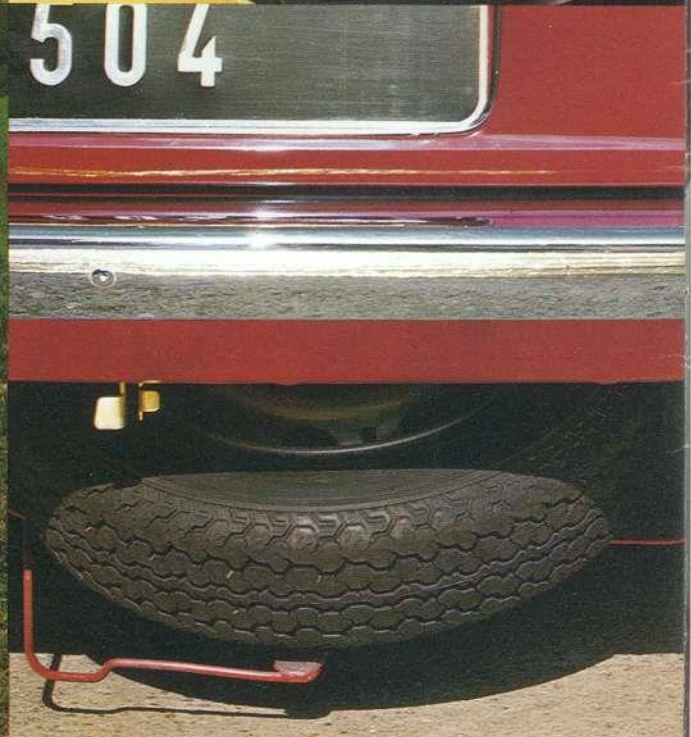
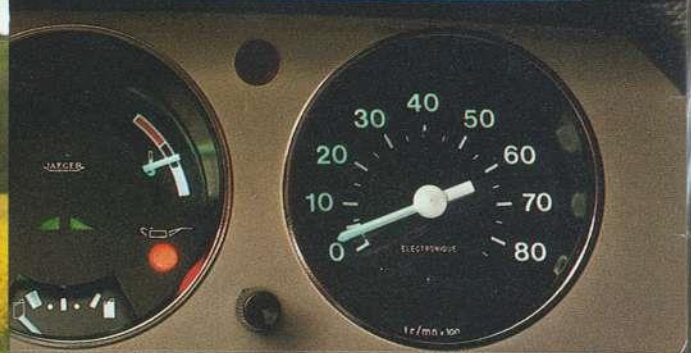
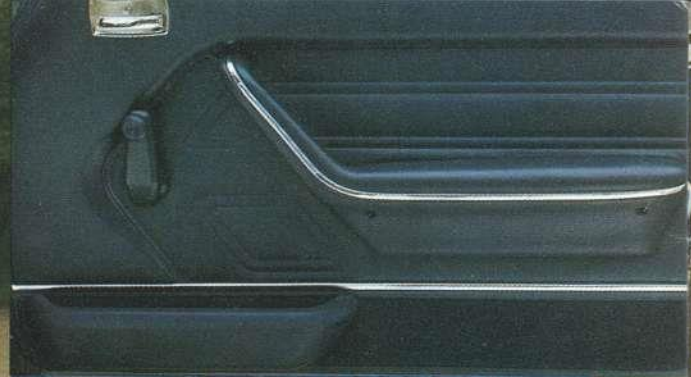
The 504 L — every bit a Peugeot.

* At a constant 56 mph — French Government Test Procedures.









peugeot504.info

504

GL

Petrol model — 96 bhp at 5200 r.p.m.
Top speed 102 m.p.h.

Diesel model — 70 bhp at 4500 r.p.m.
Top speed 88 m.p.h.

Floor mounted gear lever
Inertia reel safety belts
Halogen headlamps (not on GLD)
Sunshine roof
Laminated windscreen

Optional: Metallic paint finish
Automatic transmission



504

TI

Injection — 106 bhp at 5200 r.p.m.
Top speed 108 m.p.h.

Power assisted steering
Sunshine roof
Electrically operated front windows
Electronic rev. counter
Inertia reel safety belts
Halogen headlamps

Optional: Metallic paint finish
Automatic transmission



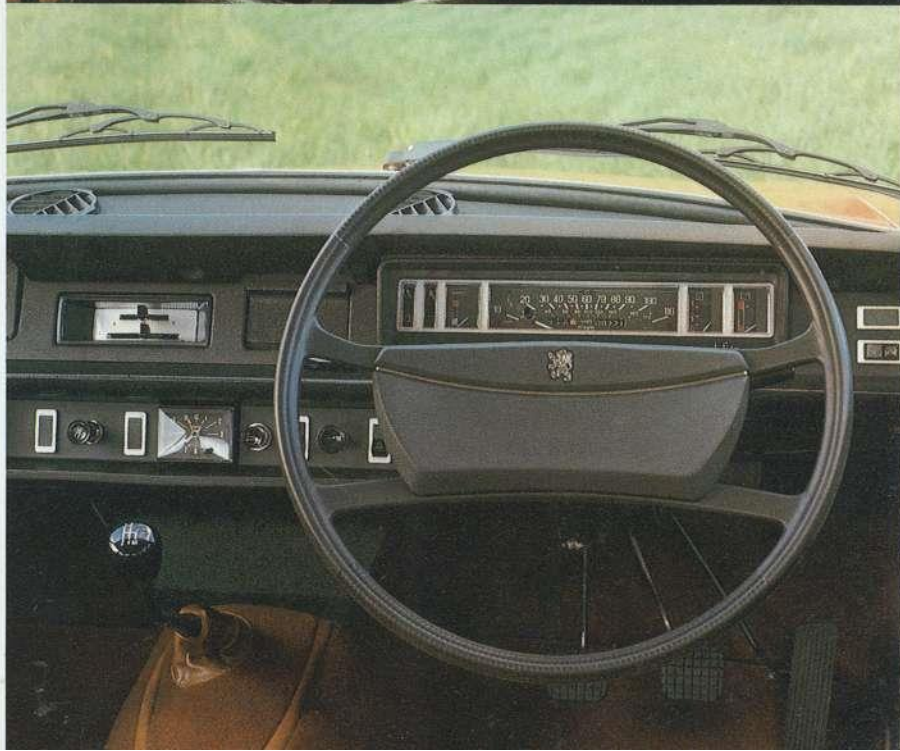
504

L

Petrol model — 79 bhp at 5100 r.p.m.
Top speed 83 m.p.h.
Runs on 2-star petrol

Diesel model — 55 bhp at 4500 r.p.m.
Top speed 82 m.p.h.

Laminated windscreen
Inertia reel safety belts
Heated rear screen



504 Diesel

The 504 LD Saloon: 1948 cc 55 bhp
Top speed 83 mph

The 504 GLD Saloon: 2304 cc 70 bhp
Top speed 88 mph
(automatic transmission available)

LOWER COST MOTORING

Peugeot were pioneers in the introduction of diesel engines for passenger cars, (we have made more than 1 million!). So why not take advantage of our experience to make substantial savings in your fuel bill.

Diesel — it's a real advantage for the high mileage motorist, even more so in town. Look at the price of diesel compared with petrol, and of course there are no difficulties with after sales maintenance, since all Peugeot Dealers are trained and equipped to service the 504 Diesels.



Specification

	504 TI	504 GL	504 L
Bodywork and General	One-piece steel body shell. Overall length 4.49 m (14'9"), overall width 1.69 m (5'6½"). Height unladen 1.46 m (4'9"), laden 1.41 m (4'7"). Wheelbase 2.74 m (8'11"). Overall turning circle 10.9 m (35'8"). Tank capacity 56 Litres (12.25 galls). Diaphragm clutch. Ball thrust-bearing. Hydraulic operation. 4-speed silent synchromesh and reverse. Hypoid rear axle (floating GL & TI). Homokinetic Glaenzer Spicer tripod drive shaft joints on GL & TI. Suspension by coil springs and double-acting Peugeot hydraulic shock-absorbers. Rack and pinion steering. Electrical supply by alternator and 12 V battery.		
Petrol Engine	Oversquare 4-cylinder in-line tilted 45°, removable wet liners. Five-bearing forged steel crankshaft.		
	Indirect injection Bore and Stroke 88 x 81. Displacement 1971 c.c. Compression ratio 8.8 : 1 Max BHP (DIN): 106 at 5,200 R.P.M. Max speed 173 km/hr (107 mph) Electric fuel pump. Kugelfischer injection pump with altitude corrector	Double-choke carburettor Bore and Stroke 88 x 81 Capacity 1971 c.c. Compression Ratio 8.8 : 1 Max. BHP (DIN) 96 at 5,200 R.P.M. Max speed 164 km/hr (101 mph)	Single-choke carburettor Bore and Stroke 84 x 81 Capacity 1796 c.c. Compression ratio 7.5 : 1 Max BHP (DIN): 79 at 5,100 R.P.M. Max speed 154 km/hr (96 mph)
Diesel Engine	Oversquare in-line 20° slant 4-cylinder. Five-bearing forged steel crank shaft.		
		XD2 Bore and Stroke 94 x 83. Capacity 2,304 c.c. Compression ratio 22.2 : 1 Max BHP (DIN) 70 at 4,500 R.P.M. Max speed 141 km/hr (87 mph)	XD88 Bore and Stroke 88 x 80. Capacity 1,948 c.c. Compression ratio 21.8 : 1 Max BHP (DIN) 58 at 4,500 R.P.M. Max speed 132 km/hr (82 mph)
Towing capacity	1,300 kg (2,886 lbs)	petrol: 1,300 kg (2,866 lbs) diesel: 1,300 kg (2,866 lbs)	petrol: 1,300 kg (2,866 lbs) diesel: 1,200 kg (2,645 lbs)
Max. Permissible laden weight	1,710 kg (3,768 lbs)	petrol: 1,710 kg (3,768 lbs) diesel: 1,760 kg (3,880 lbs)	petrol: 1,640 kg (3,615 lbs) diesel: 1,690 kg (3,725 lbs)

	TI	GL	L
Boot capacity	546 dm ³ (19.3 cu.ft.)	546 dm ³ (19.3 cu.ft.)	459 dm ³ (16.2 cu.ft.)
Electro-magnetic fan	standard	standard	standard
ZF automatic gear-box with hydro-kinetic torque converter	optional	optional	
Suspension	4 wheel independent	4 wheel independent	independent front
Tyres	175 HR 14	175 SR 14	165 SR 14
Front and rear anti-roll bars	standard	standard	standard
Two-part universally-jointed steering column	standard	standard	standard
Brakes	4 wheel disc	front disc-rear drum	front disc-rear drum
Dual brake circuit	standard	standard	standard
Hydraulic actuation with Mastervac servo and brake pressure regulator	standard	standard	standard
Handbrake and Fluid-level warning lamp	standard	standard	standard
Automatic handbrake lever adjustment	standard	standard	standard
Heated rear window	standard	standard	standard
Front side-window de-mist	standard	standard	
Reversing lights	standard	standard	standard
Two-speed wipers	standard	standard	standard
Steering column combined switch for electric screen washer pump and wipers	standard	standard	standard
Power assisted steering	standard		

	TI	GL	L
Laminated windscreen	standard	standard	standard
Electric front windows	standard		
Tachometer	standard		
Sunshine roof	standard	standard	
Inertia-reel safety belts	standard	standard	standard
Floor-mounted gear-lever	standard	standard	standard
Electric clock	standard	standard	standard
Cigarette lighter	standard	standard	standard
Glove box with lock and light	standard	standard	
Head-rests	standard	standard	
Combined height and reach seat adjustment fully reclining seat backs	standard	standard	standard
Carpets front and rear	standard	standard	standard
Centre console	standard	standard	
Heater controls illuminated by fibre optics	standard	standard	
Metallic finish	optional	optional	
Fold up rear seat centre armrest	standard	standard	standard
Rear door child locks	standard	standard	standard
Headlamp flasher	standard	standard	standard
Normal Fuel Consumption - at 90 km/h (56 mph) - at 120 km/h (74 mph) - in town	7.5 L 37.6 mpg 10.0 L 28.2 mpg 12.2 L 23.1 mpg	7.7 L 36.6 mpg 10.2 L 27.6 mpg 11.9 L 23.6 mpg	7.9 L 35.7 mpg 10.5 L 26.8 mpg 12.8 L 22.0 mpg
Engine diagnostic Socket	standard	standard	standard



1978